



REGIONAL SPECIALISED METEOROLOGICAL CENTRE-TROPICAL CYCLONES, NEW DELHI
TROPICAL CYCLONE ADVISORY NO. 28

DEMS-RSMC TROPICAL CYCLONES NEW DELHI DATED 14.05.2023

FROM: RSMC –TROPICAL CYCLONES, NEW DELHI

TO: STORM WARNING CENTRE, NAYPYI TAW (MYANMAR)
STORM WARNING CENTRE, BANGKOK (THAILAND)
STORM WARNING CENTRE, COLOMBO (SRILANKA)
STORM WARNING CENTRE, DHAKA (BANGLADESH)
STORM WARNING CENTRE, KARACHI (PAKISTAN)
METEOROLOGICAL OFFICE, MALE (MALDIVES)
OMAN METEOROLOGICAL DEPARTMENT, MUSCAT (THROUGH RTH JEDDAH)
YEMEN METEOROLOGICAL SERVICES, REPUBLIC OF YEMEN (THROUGH RTH JEDDAH)
NATIONAL CENTRE FOR METEOROLOGY, UAE (THROUGH RTH JEDDAH)
PRESIDENCY OF METEOROLOGY AND ENVIRONMENT, SAUDI ARABIA (THROUGH RTH JEDDAH)
IRAN METEOROLOGICAL ORGANISATION, (THROUGH RTH JEDDAH)
QATAR METEOROLOGICAL DEPARTMENT (THROUGH RTH JEDDAH)

TROPICAL CYCLONE ADVISORY NO. 28 FOR NORTH INDIAN OCEAN (THE BAY OF BENGAL AND ARABIAN SEA) VALID FOR NEXT 120 HOURS ISSUED AT 1100 UTC OF 14.05.2023 BASED ON 0900 UTC OF 14.05.2023

SUBJECT: EXTREMELY SEVERE CYCLONIC STORM “MOCHA” CROSSED MYANMAR-BANGLADESH COASTS

THE **EXTREMELY SEVERE CYCLONIC STORM “MOCHA”** (PRONOUNCED AS **“MOKHA”**) OVER NORTHEAST BAY OF BENGAL MOVED NORTH-NORTHEASTWARDS WITH A SPEED OF 28 KMPH DURING PAST 6 HOURS, CROSSED NORTH MYANMAR-SOUTHEAST BANGLADESH COASTS BETWEEN KYAUKPYU (MYANMAR) AND COX’S BAZAR (BANGLADESH) CLOSE TO NORTH OF SITTWE (MYANMAR) **NEAR** LATITUDE 20.25°N AND LONGITUDE 92.75°E AS AN EXTREMELY SEVERE CYCLONIC STORM WITH WIND SPEED OF 180-190 KMPH GUSTING TO 210 KMPH DURING 0700 UTC TO 0900 UTC OF TODAY, THE 14TH MAY 2023. IT LAY CENTERED AT 0900 UTC OF TODAY THE 14TH MAY 2023 OVER COASTAL MYANMAR NEAR LATITUDE 20.5°N AND LONGITUDE 92.9°E, ABOUT 40 KM NORTH OF SITTWE (MYANMAR, 48062) AND 145 KM SOUTHEAST OF COX’S BAZAR (BANGLADESH, 41992).

THE SYSTEM IS CONTINUING THE WEAKENING TREND AND WILL WEAKEN INTO A VERY SEVERE CYCLONIC STORM DURING NEXT 3 HOURS.

FORECAST TRACK AND INTENSITY ARE GIVEN BELOW:

DATE/TIME (UTC)	POSITION (LAT. °N/ LONG. °E)	MAXIMUM SUSTAINED SURFACE WIND SPEED (KMPH)	CATEGORY OF CYCLONIC DISTURBANCE
14.05.23/0900	20.5/92.9	160-170 GUSTING TO 185	EXTREMELY SEVERE CYCLONIC STORM
14.05.23/1200	21.1/93.4	130-140 GUSTING TO 155	VERY SEVERE CYCLONIC STORM
14.05.23/1800	22.5/94.4	50-60 GUSTING TO 70	DEEP DEPRESSION
15.05.23/0000	23.6/95.5	40-50 GUSTING TO 60	DEPRESSION

THE MAXIMUM SUSTAINED SURFACE WIND SPEED IS 90 KNOTS GUSTING TO 100 KNOTS. THE ESTIMATED CENTRAL PRESSURE IS ABOUT 964HPA. SEA CONDITION IS PHENOMENAL OVER NORTHEAST AND ADJOINING EAST CENTRAL BAY OF BENGAL AND HIGH AND VERY HIGH OVER ADJOINING NORTHEAST BAY OF BENGAL AND ROUGH TO VERY ROUGH OVER ADJOINING WEST CENTRAL BAY OF BENGAL.

AT 0900 UTC A BUOY (23092) NEAR 17.4°N/89.1°E REPORTED MEAN SEA LEVEL PRESSURE OF 1000.9 HPA AND MAXIMUM SUSTAINED WIND SPEED OF 320⁰/23.3 KTS. ANOTHER BUOY (23459) NEAR 13.9°N/86.9°E REPORTED MEAN SEA LEVEL PRESSURE OF 1006.7 HPA. BUOY (23093) NEAR 16.3°N/87.9°E REPORTED MEAN SEA LEVEL PRESSURE OF 1003.2 HPA AND MAXIMUM SUSTAINED WIND SPEED OF 60⁰/17.5 KTS.

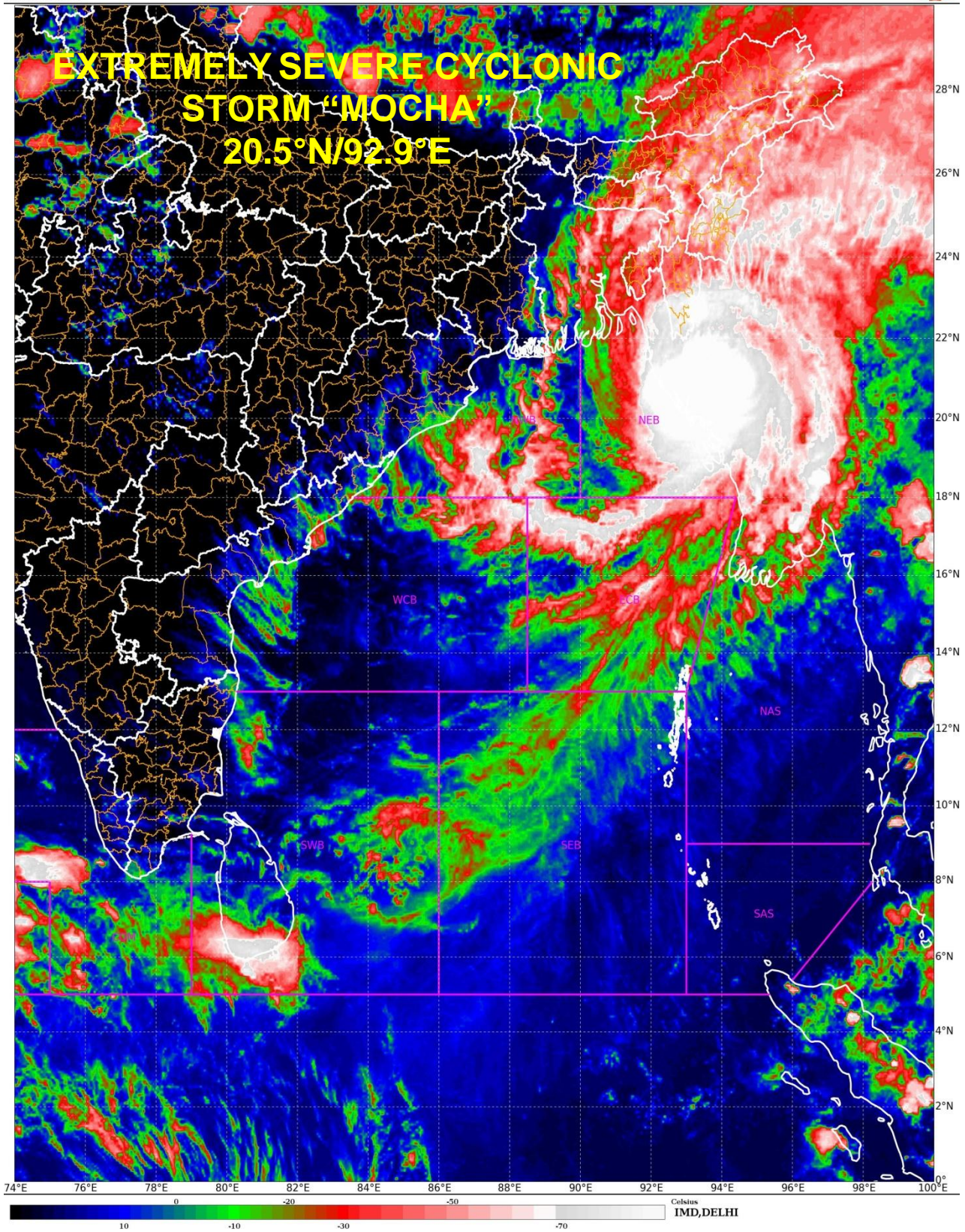
STORM SURGE GUIDANCE (GRAPHICS ATTACHED) FOR NORTH MYANMAR AND ADJOINING SOUTHEAST BANGLADESH COASTS:

STORM SURGE WITH HEIGHT OF ABOUT 3-3.5 M ABOVE THE ASTRONOMICAL TIDE IS LIKELY TO INUNDATE LOW LYING AREAS OF NORTH MYANMAR AND ADJOINING SOUTHEAST BANGLADESH COASTS DURING THE TIME OF LANDFALL.

REMARKS:

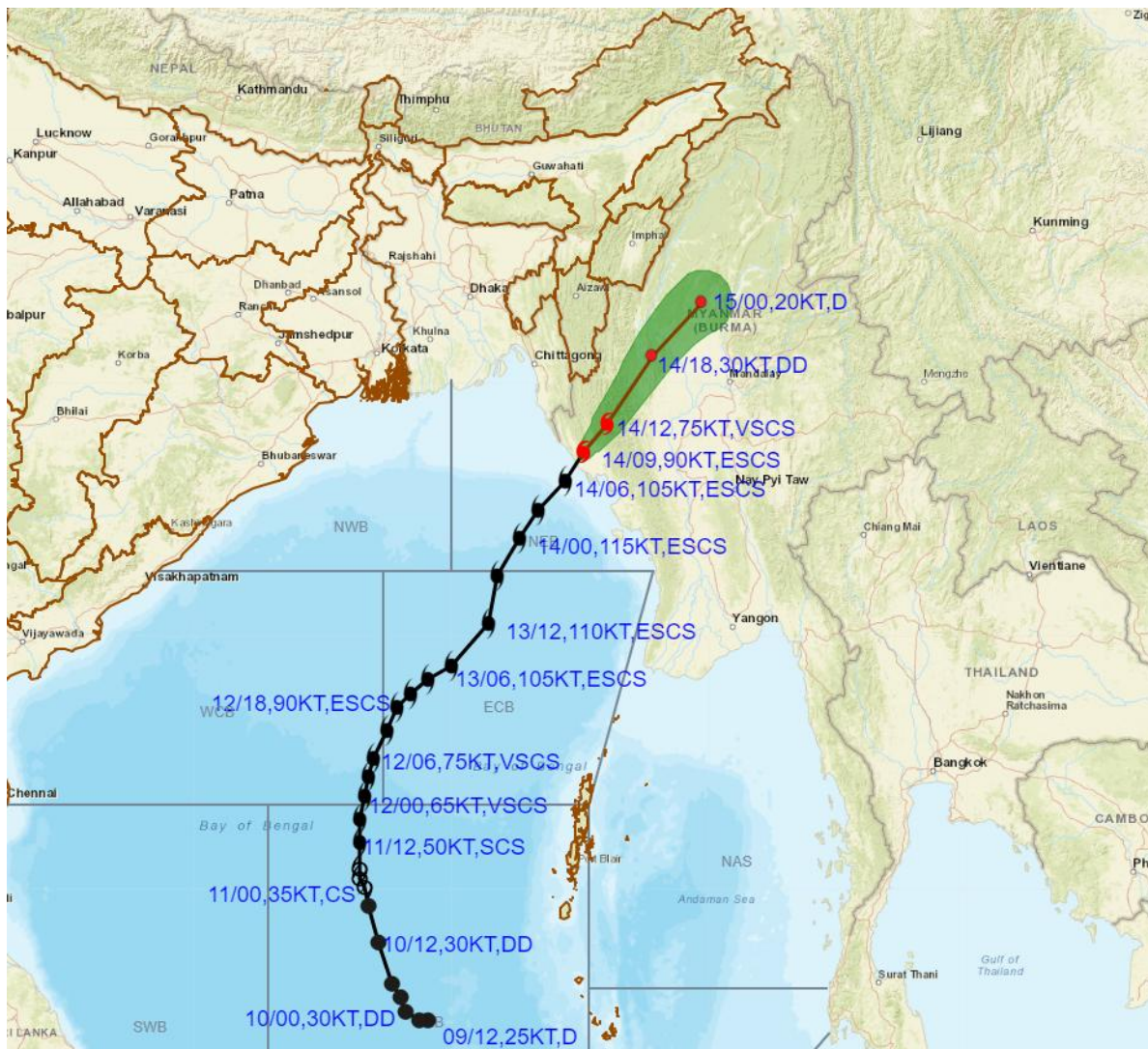
DUE TO RUGGED TERRAINS AND HIGH WIND SHEAR OVER MYANMAR, THE SYSTEM WOULD WEAKEN RAPIDLY AFTER LANDFALL.

(M. SHARMA)
SCIENTIST-D
RSMC NEW DELHI





OBSERVED AND FORECAST TRACK ALONGWITH CONE OF UNCERTAINTY OF EXTREMELY SEVERE CYCLONIC STORM MOCHA OVER COASTAL MYANMAR BASED ON 0900 UTC (1430 IST) OF 14TH MAY 2023.



DATE/TIME IN UTC
IST=UTC + 0530

L: LOW PRESSURE AREA
WML: WELL MARKED LOW PRESSURE AREA
D: DEPRESSION (17-27 KT)
DD: DEEP DEPRESSION (28-33 KT)
CS: CYCLONIC STORM (34-47 KT)
SCS: SEVERE CYCLONIC STORM (48-63KT)
VSCS: VERY SEVERE CYCLONIC STORM (64-89 KT)
ESCS: EXTREMELY SEVERE CYCLONIC STORM (90-119 KT)
SuCS: SUPER CYCLONIC STORM (≥ 120 KT)

● LESS THAN 34 KT

○ 34-47 KT

○ ≥ 48 KT

— OBSERVED TRACK

— FORECAST TRACK

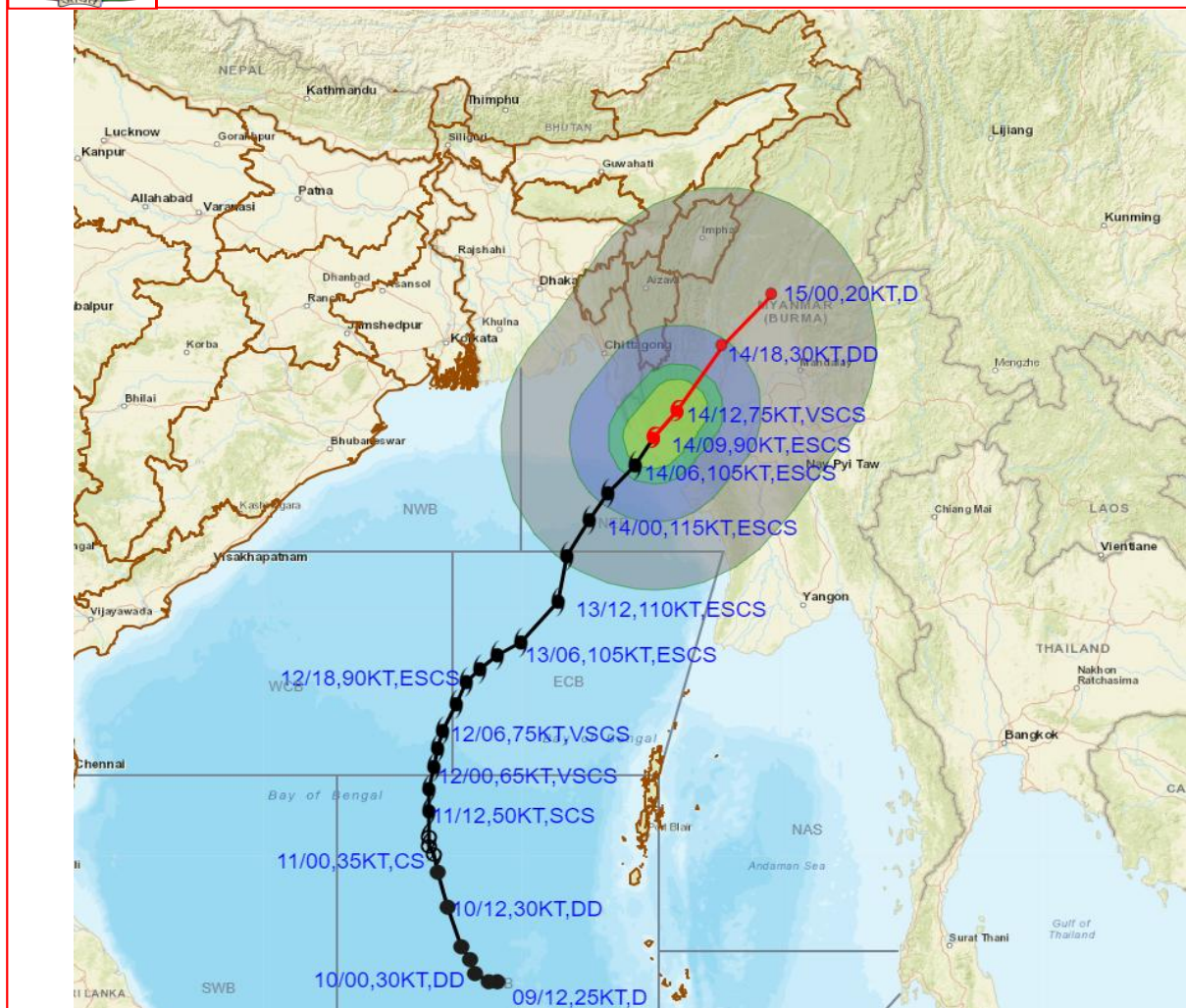
▲ CONE OF UNCERTAINTY

Forecast distance (km) and direction of the centre from nearest 5 coastal stations

Forecast Date and Time	Lead Period	Lat	Lon	Station 1	Station 2	Station 3	Station 4	Station 5
14.05.23/0900	0	20.5	92.9	SITTWE (41,N)	KYAUKTAW (48,SE)	TEKNAF (75,ESE)	KYAUKPYU (138,NNW)	COX'S BAZAR (145,SE)



OBSERVED AND FORECAST TRACK ALONGWITH QUADRANT WIND DISTRIBUTION OF EXTREMELY SEVERE CYCLONIC STORM MOCHA OVER COASTAL MYANMAR BASED ON 0900 UTC (1430 IST) OF 14TH MAY 2023.



DATE/TIME IN UTC
 IST=UTC + 0530
L: LOW PRESSURE AREA
WML: WELL MARKED LOW PRESSURE AREA
D: DEPRESSION (17-27 KT)
DD: DEEP DEPRESSION (28-33 KT)
CS: CYCLONIC STORM (34-47 KT)
SCS: SEVERE CYCLONIC STORM (48-63KT)
VSCS: VERY SEVERE CYCLONIC STORM (64-89 KT)
ESCS: EXTREMELY SEVERE CYCLONIC STORM (90-119 KT)
SuCS: SUPER CYCLONIC STORM (≥ 120 KT)

- LESS THAN 34 KT
- 34-47 KT
- ⦿ ≥ 48 KT
- OBSERVED TRACK
- FORECAST TRACK
- CONE OF UNCERTAINTY

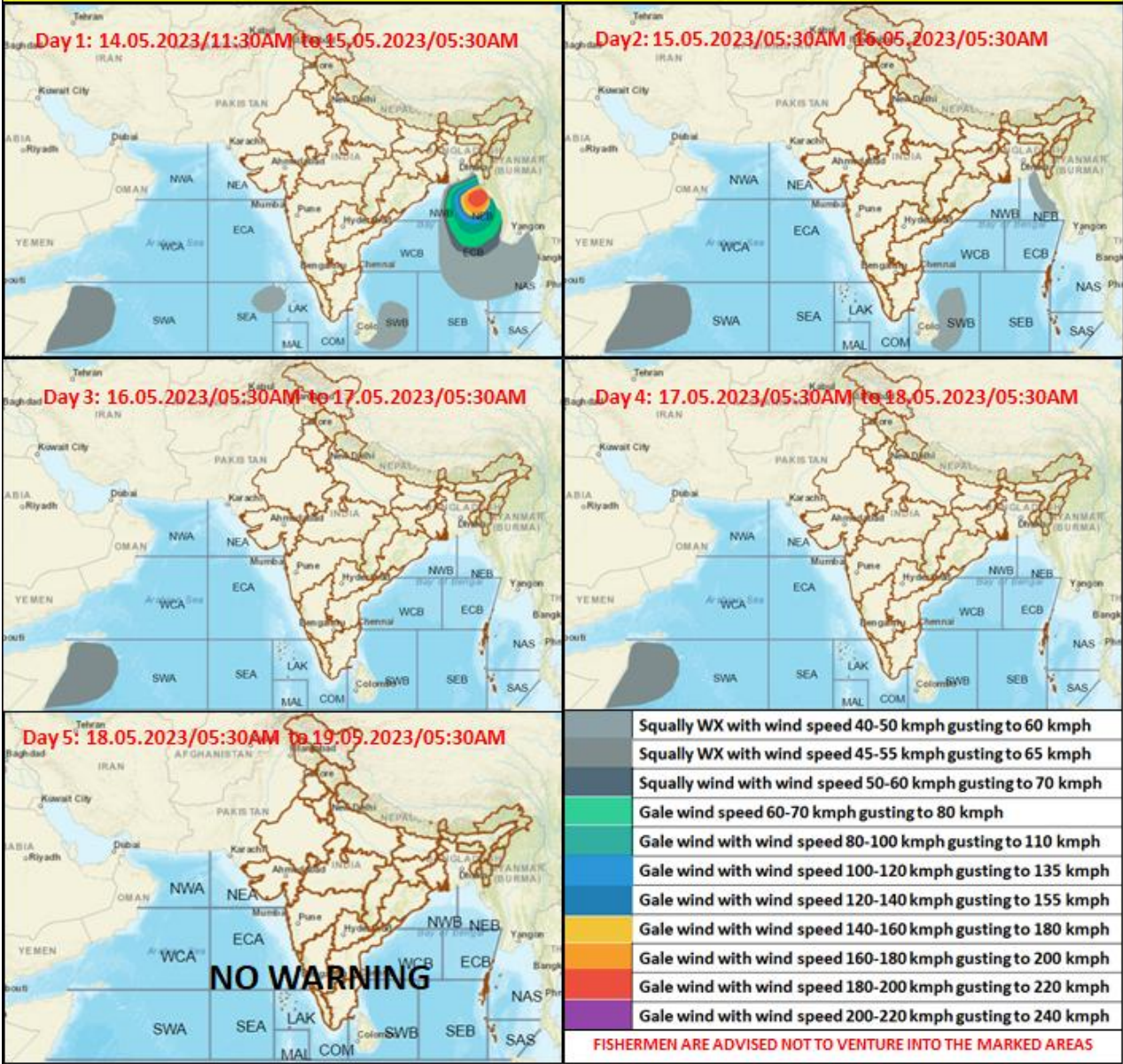
AREA OF MAXIMUM SUSTAINED WIND SPEED:

- 28-33 KT (52-61 KMPH)
- 34-49 KT (62-91 KMPH)
- 50-63 KT (92-117 KMPH)
- ≥ 64 KT (≥118 KMPH)

IMPACT OVER THE SEA

MSW (knot/kmph)	Impact	Action
28-33 (52-61)	Very rough seas	Total suspension of fishing operations
34-49 (62-91)	High to very high seas	Total suspension of fishing operations
50-63 (92-117)	Very high seas	Total suspension of fishing operations
≥ 64 (≥118)	Phenomenal	Total suspension of fishing operations

Fishermen warning graphics



Storm surge

